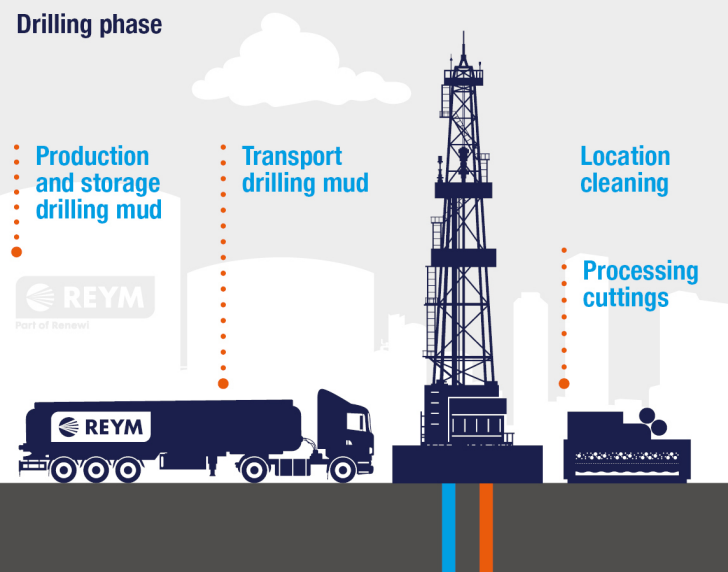


# Geothermal drilling

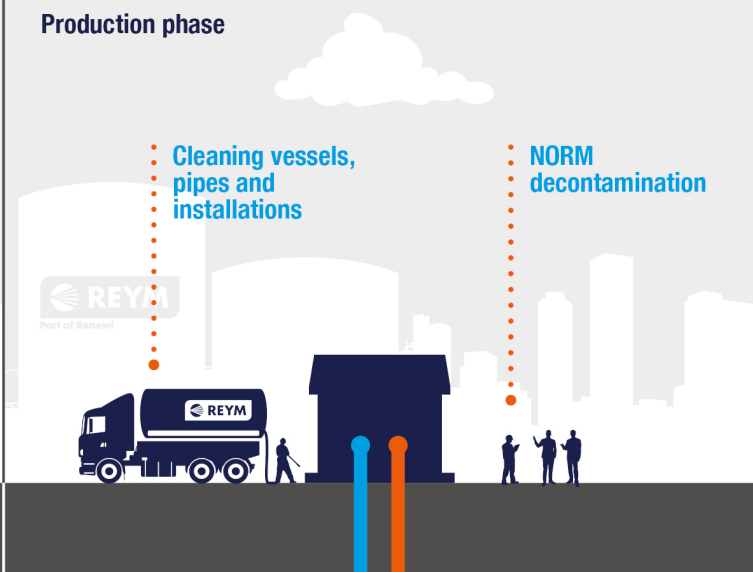
REYM is an industrial service provider. We support our customers in the field of industrial cleaning, transport and waste management, always acting from our mission 'Industrial Services our concern' and driven by our core values.

## Geothermal well

### Drilling phase



### Production phase



Geothermal energy is being used increasingly for the heating of houses, greenhouses and various other industrial activities. It is a sustainable and clean alternative to natural gas and contributes to our energy independence and a cleaner environment. REYM offers various support services during drilling activities but also afterwards, when the geothermal well is in operation. For instance, producing and storing drilling mud, cleaning of pipes and installations and decontaminating of Naturally Occurring Radioactive Material (NORM).

### The REYM Services:

#### Integrated approach

REYM offers a strategic network of offices and a broad service package. This allows it to provide support on a 24/7 basis during the whole process. From producing and transporting drilling mud to the cleaning of the drilling rig, vessels, pipes and installations, REYM offers total care services during drilling and production phase.

#### Drilling mud

At its Central mud plant at Emmen, REYM independently produces all conceivable types of drilling mud and production fluids, tailored to client specs and suited for geothermal drilling and the oil and gas extraction industry.

### Drilling phase

REYM offers Logistic, Waste, Rental and Cleaning Coordination (LWRCC). For example:

- Installation and maintaining of waste water and rainwater separation systems
- Handling and separation of (small) dangerous and domestic waste
- Cleaning (rig site, mud systems, transfer lines, rigs)
- Mud and cutting storage
- Production of WBM, OBM, Brines, mud pushes
- Transport (WBM and OBM mud)
- Transport and treatment (cement contaminated mud and water)
- Waste management and administration
- Waste Treatment
- Storage, transport and treatment of:  
OBM/WBM polluted water  
wastewater, WBM cutting  
domestic and industrial waste  
(small) dangerous waste
- Recycling and treatment of OBM and WBM cuttings
- General drilling assistance
- Logistics management and documentation of all incoming and outgoing goods, liquids and waste

### Production phase

REYM offers several services with use of vacuum, high pressure (HP) water and chemical cleaning.

- Industrial cleaning of:  
Tanks  
Locations  
Process installation parts  
Pipelines, sludge catcher  
Rainwater basins  
Well cellars  
Location sewage system and rainwater systems
- Change of catalyst gas dryer
- Assistance (with spills to avoid environmental damage)
- Transport and treatment (small) dangerous waste
- Waste management and administration
- Rental, installation and maintenance (specific pump and storage systems)
- NORM decontamination

If you would like more information, please contact one of the REYM branches in your region.

[info@reym.nl](mailto:info@reym.nl) // [www.reym.nl](http://www.reym.nl)